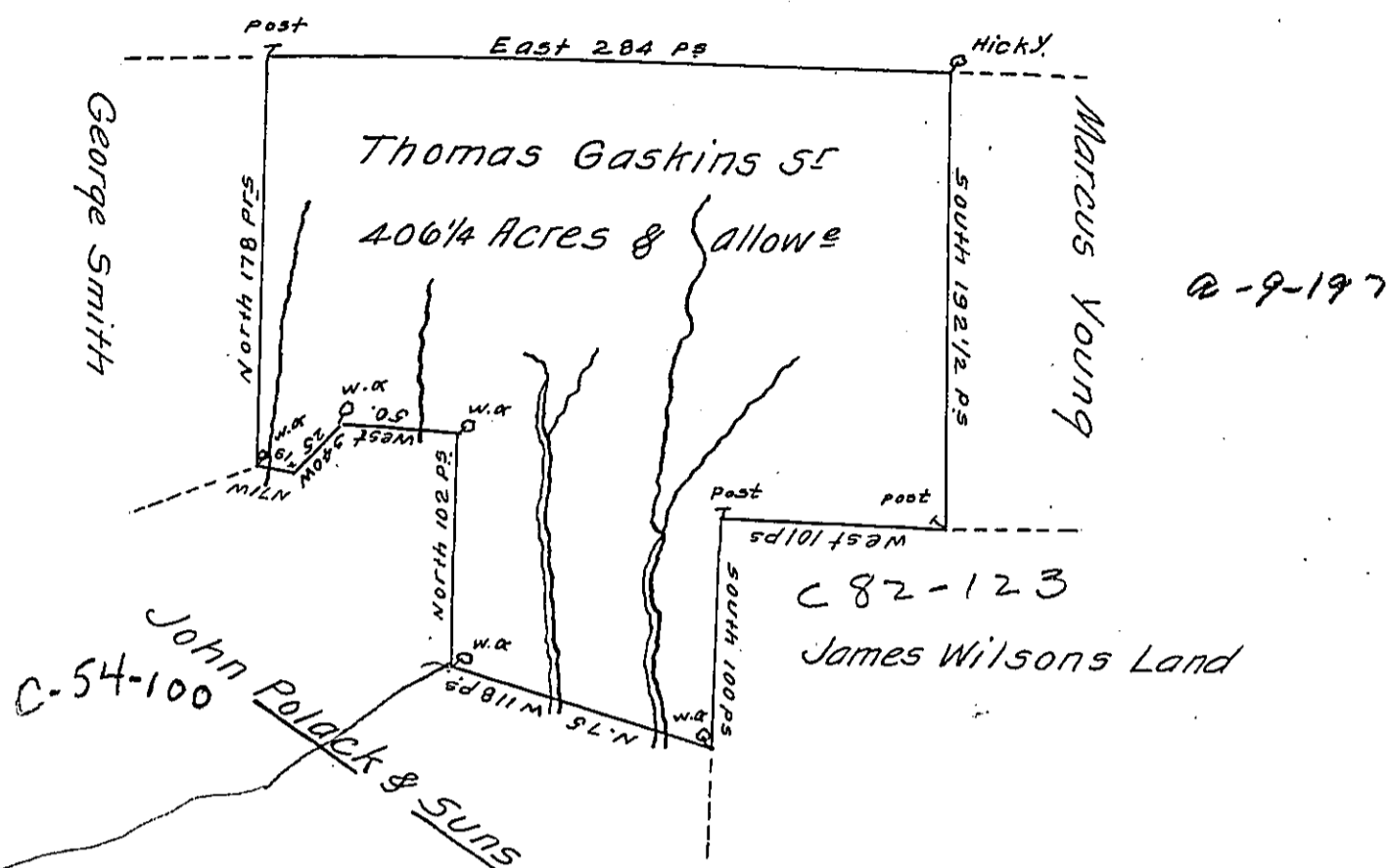


Chilisquaque Ridge



A Draught of A Tract of Land Called— Situate Adjoining land of John Pollock, James Wilson and Others in Mahoning Township in the County of Northumberland, Survey'd the 26th day of September 1785. for Thomas Gaskins by Virtue of his Warrant bearing date the fifth day of August 1785. Containing Four Hundred and Six Acres and One Quarter with the Allowance of Six Cent for Roads &c.

Jo. J. Wallis D.S.

To John Lukens Esq^r }
 Surveyor Gen^l }

IN TESTIMONY that the above is a copy of the original remaining on file in the Department of Internal Affairs of Pennsylvania, made conformably to an Act of Assembly approved the 16th day of February, 1833, I have hereunto set my Hand and caused the Seal of said Department to be affixed at Harrisburg, this thirtieth day of November 1910.

Henry Houch
 Secretary of Internal Affairs.